



Desktop Printers

GE300 / GE330

Economical 4" Thermal Transfer Desktop Printer

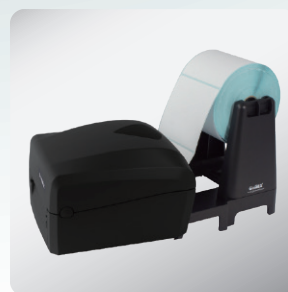
Use the GE300 for all your light to medium duty thermal transfer barcode printing applications



Ethernet, Serial and USB ports included



Uses standard low-cost labels and ribbons



High cost-effectiveness for large amount printing



Free labeling software GoLabel II for easy printing



GE300 / GE330 Printer Specification

2024/3/13

Model	GE300	GE330
Print Method	Thermal Transfer / Direct Thermal	
Resolution	203 dpi (8 dots/mm)	300 dpi (12 dots/mm)
Print Speed	5 IPS (127 mm/s)**	4 IPS (102 mm/s)**
Print Width	4.25" (108 mm)	4.16" (105.7 mm)
Print Length	Min. 0.16" (4 mm)** Max. 68" (1727 mm)	Min. 0.16" (4 mm)** Max. 30" (762 mm)
Processor	32 Bit RISC CPU	
Memory	8MB Flash (4MB for user storage) ; 16MB SDRAM	
Sensor Type	Adjustable reflective sensor (full range). Fixed transmissive sensor	
Media	Types : Continuous form, gap labels, black mark sensing, and punched hole; label length set by auto sensing or programming Width : 1" (25.4 mm) Min. - 4.65" (118 mm) Max. Thickness : Min. 0.0024" (0.06 mm) –Max. 0.008" (0.2 mm) Label Roll Diameter : Max. 5" (127 mm) Core Diameter : 1" (25.4 mm), 1.5" (38.1 mm)	
Ribbon	Types : Wax, wax / resin, resin Length : 360' (110 m) Width : 1.18" Min. - 4.33" (30 mm - 110 mm) Max. Ribbon Roll Diameter : 1.57" (40 mm) Core Diameter : 0.5" (12.7 mm)	
Printer Language	EZPL, GEPL, GZPL, GDPL auto switch	
Software	Label design tool: GoLabel II (for EZPL only) (Windows) Management tools: GoTools (Windows / Android) \ GoUtility (Windows) Satin ribbon printing tool: GoRibbon (Windows) APP: GoAPP (Android / iOS)	
Driver	Windows 7, Windows 8 & 8.1, Windows 10, Windows 11, Windows Server 2008 R2, 2012, 2012 R2, 2016, 2019, 2022, MAC, Linux	
SDK	Win CE, .NET, Windows 7, Windows 8 & 8.1, Windows 10, Windows 11, Android, Mac, iOS	
Resident Fonts	Bitmap fonts: 6, 8, 10, 12, 14, 18, 24, 30, 16X26 and OCR A & B 0°, 90°, 180°, 270° rotatable, single characters 0°, 90°, 180°, 270° rotatable 8 times expandable in horizontal and vertical directions TTF Fonts: (Bold / Italic / Underline). 0°,90°, 180°, 270° rotatable	
Download Fonts	Bitmap fonts: 0°, 90°, 180°, 270° rotatable, single characters 0°, 90°, 180°, 270° rotatable Asian fonts: 16x16, 24x24. Traditional Chinese (BIG-5), Simplified Chinese (GB2312), Japanese (S-JIS), Korean (KS-X1001) 0°, 90°, 180°, 270° rotatable and 8 times expandable in horizontal and vertical directions TTF fonts: (Bold / Italic / Underline). 0°,90°, 180°, 270° rotatable	
Barcodes	1-D Bar codes: China Postal Code, Codabar, Code 11, Code 32, Code 39, Code 93, Code 128 (subset A, B, C), EAN-8/EAN-13 (with 2 & 5 digits extension), EAN 128, FIM, German Post Code, GS1 DataBar, HIBC, Industrial 2 of 5 , Interleaved 2-of-5 (1 2 of 5) , Interleaved 2-of-5 with Shipping Bearer Bars, ISBT-128, ITF 14, Japanese Postnet, Logmars, MSI, Postnet, Plessey, Planet 11 & 13 digit, RPS 128, Standard 2 of 5, Telepen, Matrix 2 of 5, UPC-A/UPC-E (with 2 or 5 digit extension), UCC/EAN-128 K-Mart, Random Weight and Pharmacode 2-D Bar codes: Aztec code, Code 49, Codablock F, Datamatrix code, MaxiCode, Micro PDF417, Micro QR code, PDF417, QR code, TLC 39, GS1 Composite, DotCode, Marco PDF 417	
Code Pages	Codepage 437, 737, 850, 851, 852, 855, 857, 860, 861, 862, 863, 865, 866, 869 Windows 1250, 1251, 1252, 1253, 1254, 1255, 1257 Unicode UTF8 \ UTF16BE \ UTF16LE	
Graphics	Resident graphic file types are BMP and PCX, other graphic formats are downloadable from the software	
Interfaces	USB 2.0 (Type B) Serial port (RS232) Ethernet 10/100 Mbps	
Real Time Clock	Options	
Control Panel	One Tri-color LED: Power (Green, Orange and Red) Function Key: FEED Calibration Button	
Power	External auto switching power supply Input: AC 100-240V, 50-60Hz Output: DC 24V, 2.5A	
Environment	Operation temperature: 41°F to 104°F (5°C to 40°C) Storage temperature: -4°F to 140°F (-20°C to 60°C)	
Humidity	Operation: 30-85%, non-condensing. Storage: 10-90%, non-condensing.	
Agency Approvals	CE (EMC), FCC Class B, CB, cULus, CCC, BSMI, UKCA, BIS, ENERGY STAR***	
Dimension	Length: 252 mm (9.92") Width: 200 mm (7.87") Height: 165 mm (6.50")	
Weight	1.8 kg (4 lbs), excluding consumables Cutter module (Dealer Install) BT (Dealer Install) Wireless LAN (IEEE 802.11 b/g/n) (Dealer Install) WiFi (IEEE 802.11 b/g/n) and BT (BLE 5.0) combo module (Dealer Install) Real Time Clock (RTC) (Dealer Install) External label unwind stand External label rewinder Left Alignment Printing Mechanism (Factory Install)	
Options		

* Specifications are subject to change without notice. All company and/or product names are trademarks and/or registered trademarks of their respective owners.

** Minimum print height and maximum print speed specification compliance can be dependent on non-standard material variables such as label type, thickness, spacing, liner construction, etc. Godex is pleased to test non-standard materials for minimum print height, and maximum print speed capability.

*** The safety certification marks may be different depending on sales regions.

Applications

Applications for Labels & Barcodes

GE300 / GE330 is your best friend for getting the job done instantly.



Health Care

Tube tags, pharmaceutical Labels patient identification, medical records, and laboratory specimen tags.

Warehouses, Logistic & Transportation

Stack label, Product label, Postal slip Storage management, Dispatch label, Packaging label, Delivery receipt, etc.

Administration

ID cards, document and records management, access control management, library management & organization and classification system, ISBN application, etc.

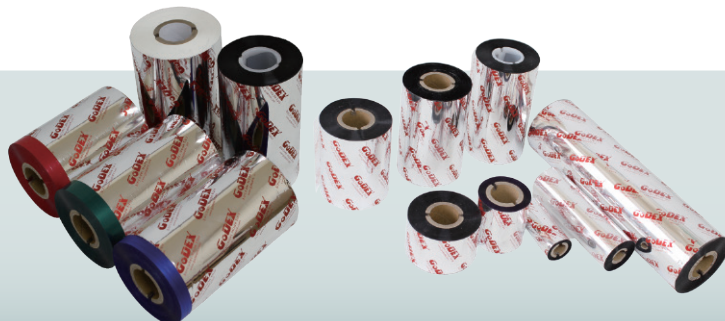
GoDEX

RIBBONS

High quality original GoDEX thermal transfer ribbons

GoDEX offers premium thermal transfer ribbons that will fit most of your printing applications.

- Wax
- Wax/ Resin
- Resin
- Near Edge



GoDEX

LABEL DESIGN SOFTWARE

GoLabel II Software / User Friendly

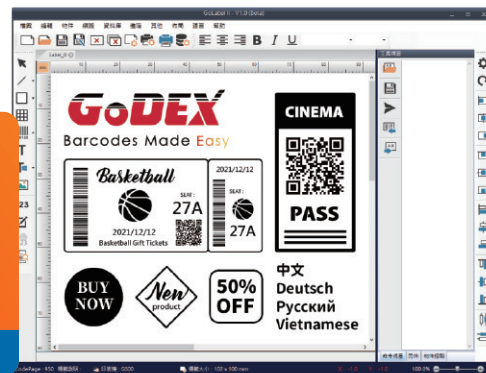
GoLabel II is based on a WYSIWYG (what you see is what you get) user interface, makes everything so easy for you to create and print barcode labels. GoLabel II is the first-choice label design software that you can't miss it!

Go visit www.godexintl.com and download GoLabel II to experience it!

GoLabel II
Label design software



GoDEX



GoDEX
www.godexintl.com

Godex International
(Headquarters)
Telephone : +886 2 2225 8580
Contact us : infoGT@godexintl.com

Godex Americas
Telephone : +1 805 987 5100
Contact us : infoGA@godexintl.com

Godex China
Telephone : +86 21 56651313
Contact us : infoGC@godexintl.com

Godex Europe
Telephone : +49 2195 59599 0
Contact us : infoGE@godexintl.com