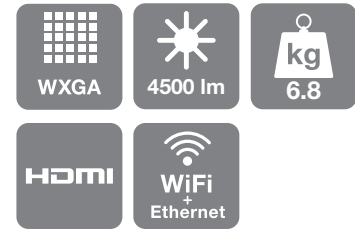


# Epson EB-G5650W/NL

DATASHEET



This best-in-class projector is designed and built to meet the exacting requirements of large venue installation.

Designed for large education and corporate venues, and specialist vertical markets, the projector has an equally high White and Colour Light Output (CLO) thanks to Epson's 3LCD technology. This means presentations have vivid yet natural colours even in full daylight.

The projector displays images at WXGA widescreen resolution that shows 30 per cent more pixels than traditional XGA projectors and is compatible with the vast majority of computers available today.

EasyMP Network & Control: Monitor the status of your projector, email the administrator and set up alerts, so the projector emails the administrator in case of any issues. You can also broadcast a message to the network with the included EasyMP Network Projection software.

Product durability is assured and TCO kept to a minimum with the addition of the long-life C<sup>2</sup>Fine Inorganic LCD panel and long-lasting lamp. And for low maintenance, the electrostatic filter can be cleaned or changed quickly.

The projector is available in two models: the EB-G5650W which comes with the Standard Lens, and the EB-G5650WNL which comes without a lens. Five optional lenses are available, allowing you to create the perfect projector to suit particular venues and different types of multimedia content.

## KEY FEATURES

- WXGA resolution
- 3LCD for outstanding picture quality
- 4,500 lumens for bright daylight viewing
- Lens shift
- Straightforward installation and operation
- Low maintenance with long-lasting lamp



**EPSON**  
EXCEED YOUR VISION

## PRODUCT SPECIFICATIONS

PROJECTION TECHNOLOGY	3LCD Technology 0.74 inch with MLA
RESOLUTION	WXGA – 1280 x 800 (16:10 aspect ratio) Up to WSXGA+/1080p
WHITE LIGHT OUTPUT * Normal / Eco	4500 / 3600 Lumens
COLOUR LIGHT OUTPUT * Normal / Eco	4500 / 3600 Lumens
CONTRAST	2000:1
LAMP Life (Normal / Eco) Type	2000 / 3000 hours 330W UHE
LENS	EB-G5650W: Standard Lens EB-G5650WNL: no lens Optional lenses available, see Optional Lens Specifications chart for full details
CONNECTIVITY Video input Audio input Digital input Computer input Control input Computer output Audio output Wireless connection	1 x RCA, 1 x S-Video, 2 x component (via D-sub 15-pin), 1 x HDMI, 1 x 1-BNC 3 x Stereo mini-jack, 1 x RCA (R/L), 1 x HDMI 1 x HDMI 2 x D-sub 15-pin (RGB), 1 x 5-BNC 1 x RJ-45, 1 RS-232C 1 x D-sub 15-pin (RGB) 1 x Stereo mini-jack 1x Wireless LAN Unit, 1 x optional Quick Wireless Connection USB Key
ADVANCED FEATURES Security Operation EasyMP features Display	Security cable hole, lens lock, Kensington lock hole, password protection, Wireless LAN Unit lock Lens shift, split-screen function, direct power on/off, instant off EasyMP PC Free, EasyMP Network & Control, EasyMP Network Presentation 8 colour modes (including DICOM Simulation)
LANGUAGES	English / French / German / Italian / Spanish / Dutch / Portuguese / Danish / Russian / Swedish / Norwegian / Finnish / Polish / Hungarian / Slovenian / Czech / Ukrainian / Romanian / Catalan / Greek / Turkish / Arabic / Japanese / Korean / Traditional Chinese / Simplified Chinese / Thai
NOISE LEVEL Normal / Eco	38dB / 32dB
SOUND	1 x 7 Watt
WEIGHT	6.8kg
DIMENSIONS (W X D X H)	470 x 135 x 311.5 mm
POWER CONSUMPTION Normal / Eco Standby	442W / 367W 0.47W
WARRANTY	2 years on main unit; 1 year on lamp

\* ISO 21118 based measurement

## PRODUCT LOGISTICS

PROJECTOR MODEL	EB-G5650W	EB-G5650WNL
SKU CODE		
BARCODE		
WHAT'S IN THE BOX	Projector Standard lens Power cable Computer cable Remote control and batteries Lens cover Cable cover Lens lock cover Password protect sticker Wireless LAN unit Bundled software User's manual set	Projector Power cable Computer cable Remote control and batteries Lens cover Cable cover Lens lock cover Password protect sticker Wireless LAN unit Bundled software User's manual set
GROSS WEIGHT	10.7kg	10.04kg
CARTON DIMENSIONS (L x W x H)	570 x 549 x 282mm	570 x 549 x 282mm

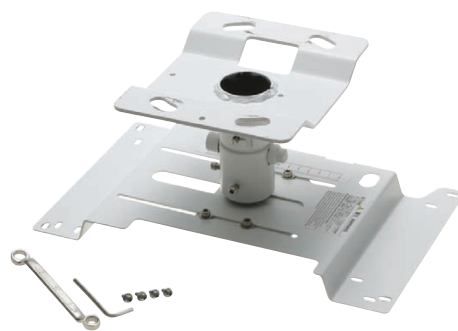
## OPTIONAL LENSES

- Standard Lens  
V12H004S05 (ELPLS05)
- Rear Projection Wide Lens  
V12H004R03 (ELPLR03)
- Middle Throw Zoom Lens 1  
V12H004M04 (ELPLM04)
- Middle Throw Zoom Lens 2  
V12H004M05 (ELPLM05)
- Long Throw Zoom Lens  
V12H004L06 (ELPLL06)

See *Optional Lens Specifications chart* for full details

## OPTIONAL ACCESSORIES

- Spare lamp  
V13H010L63 (ELPLP63)
- Air filter  
V13H134A17 (ELPAF17)
- Wireless LAN unit (ELPAP03)
- Quick Wireless Connection USB Key (ELPAP08)
- 80-inch pull-up screen 16:10  
V12H002S24 (ELPSC24)
- Epson Desktop Visualiser
- Epson USB Visualiser  
V12H321003 (ELPDC06)
- Ceiling mount  
V12H003B22 (ELPMB22)
- Ceiling pipe 668–918mm  
V12H003P13 (ELPPF13)
- Ceiling pipe 918–1168mm  
V12H003P14 (ELPPF14)



Tailor-made ceiling mount for easy installation and security



For further information please contact your local Epson office or visit [www.epson-europe.com](http://www.epson-europe.com)

Austria 0810/20 01 13 (0,07 €/Min.) Belgium 070/350120 (0.1735 €/min.) Czech 800/142 052 Denmark 44 50 85 85 Finland 0201 552 091  
France 09 74 75 04 04 (Cost of local call, operator charges may apply) Germany 01805/23 41 10 (0,14 €/Min. aus dem dt. Festnetz, Mobilfunkpreise abweichend. Ab 1.3.2010 Mobilfunkpreis max. 0,42 €/Min.) Greece 210-8099499 Hungary 06800 147 83 Ireland 01 436 7742 Italy 02-660321 10 (0,12 €/min.) Luxembourg 900/43010 (0,24 €/min.) Middle East +9714 8818934 Netherlands 0900-5050808 (0,05 €/oproep + 0,15 €/min.)  
Norway +47 67 11 37 00 Poland 0-0-800 4911299 (0,16 zł/min.) Portugal 707 222 111 Russia (095) 777-03-55 Slovakia 0850 111 429  
South Africa (+2711) 465-9621 Spain 93 582 15 00 Sweden 0771-400135 (Mobilsamtal – 0,99 kr/min, Lokala samtal – 0,30 kr/min, Utlandsamtal – 0,89 kr/min)  
Switzerland 0848 448820 (4-8 cent./min.) Turkey (0212) 3360303 United Kingdom 0871 222 6702

Trademarks and registered trademarks are the property of Seiko Epson Corporation or their respective owners.  
Product information is subject to change without prior notice.

# EPSON®